

Middlesex University Research Repository:

an open access repository of
Middlesex University research

<http://eprints.mdx.ac.uk>

Workman, Barbara, 2010. Building awards in continuous professional development using work based learning. Available from Middlesex University's Research Repository.

Copyright:

Middlesex University Research Repository makes the University's research available electronically.

Copyright and moral rights to this work are retained by the author and/or other copyright owners. No part of the work may be sold or exploited commercially in any format or medium without the prior written permission of the copyright holder(s). A copy may be downloaded for personal, non-commercial, research or study without prior permission and without charge. Any use of the work for private study or research must be properly acknowledged with reference to the work's full bibliographic details.

This work may not be reproduced in any format or medium, or extensive quotations taken from it, or its content changed in any way, without first obtaining permission in writing from the copyright holder(s).

If you believe that any material held in the repository infringes copyright law, please contact the Repository Team at Middlesex University via the following email address:
eprints@mdx.ac.uk

The item will be removed from the repository while any claim is being investigated.



Work Based Learning
at Middlesex University

Building Awards in Continuous Professional Development using Work Based Learning

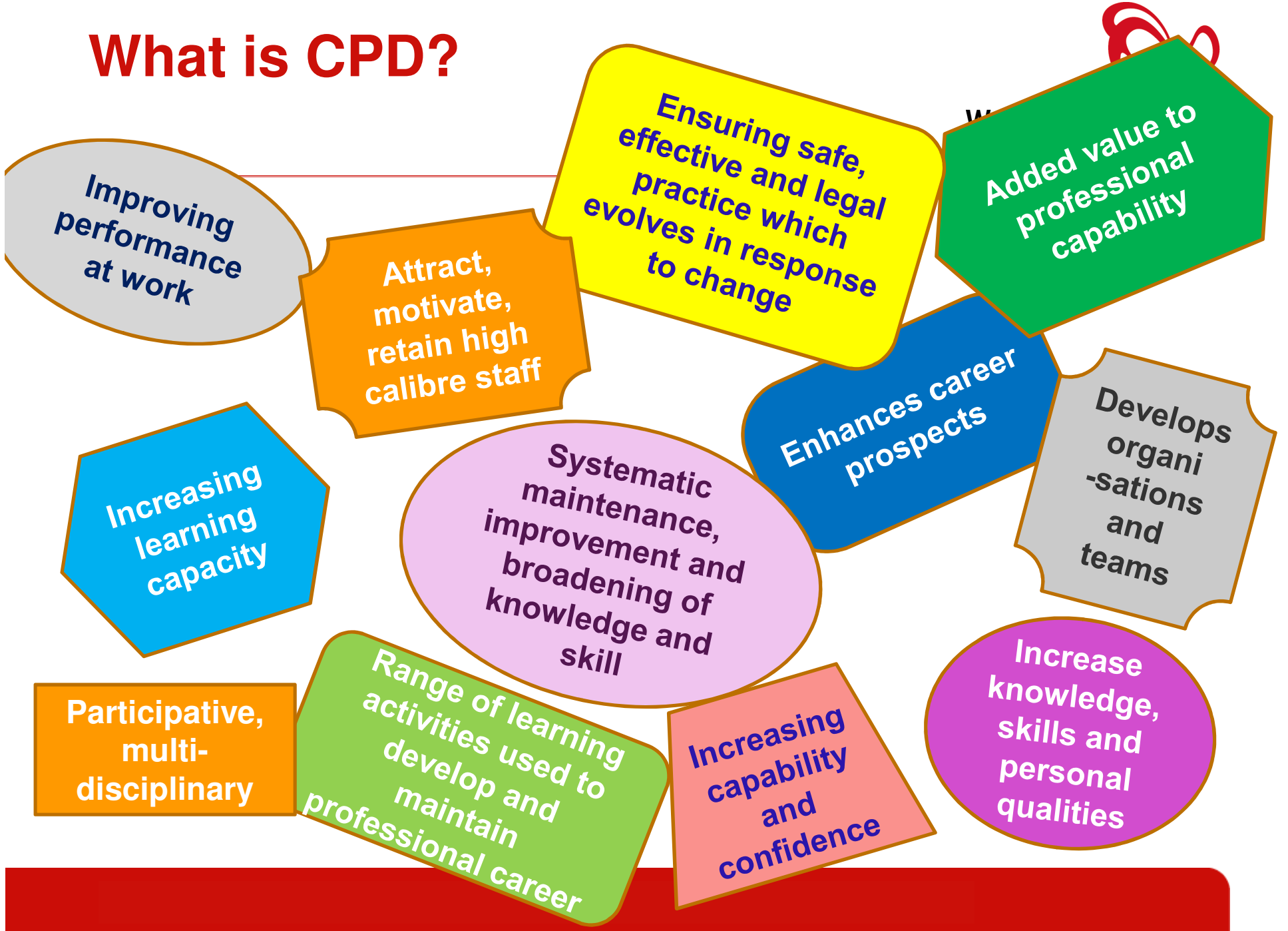
Barbara Workman

Director

b.workman@mdx.ac.uk

Centre for Excellence in Work Based Learning

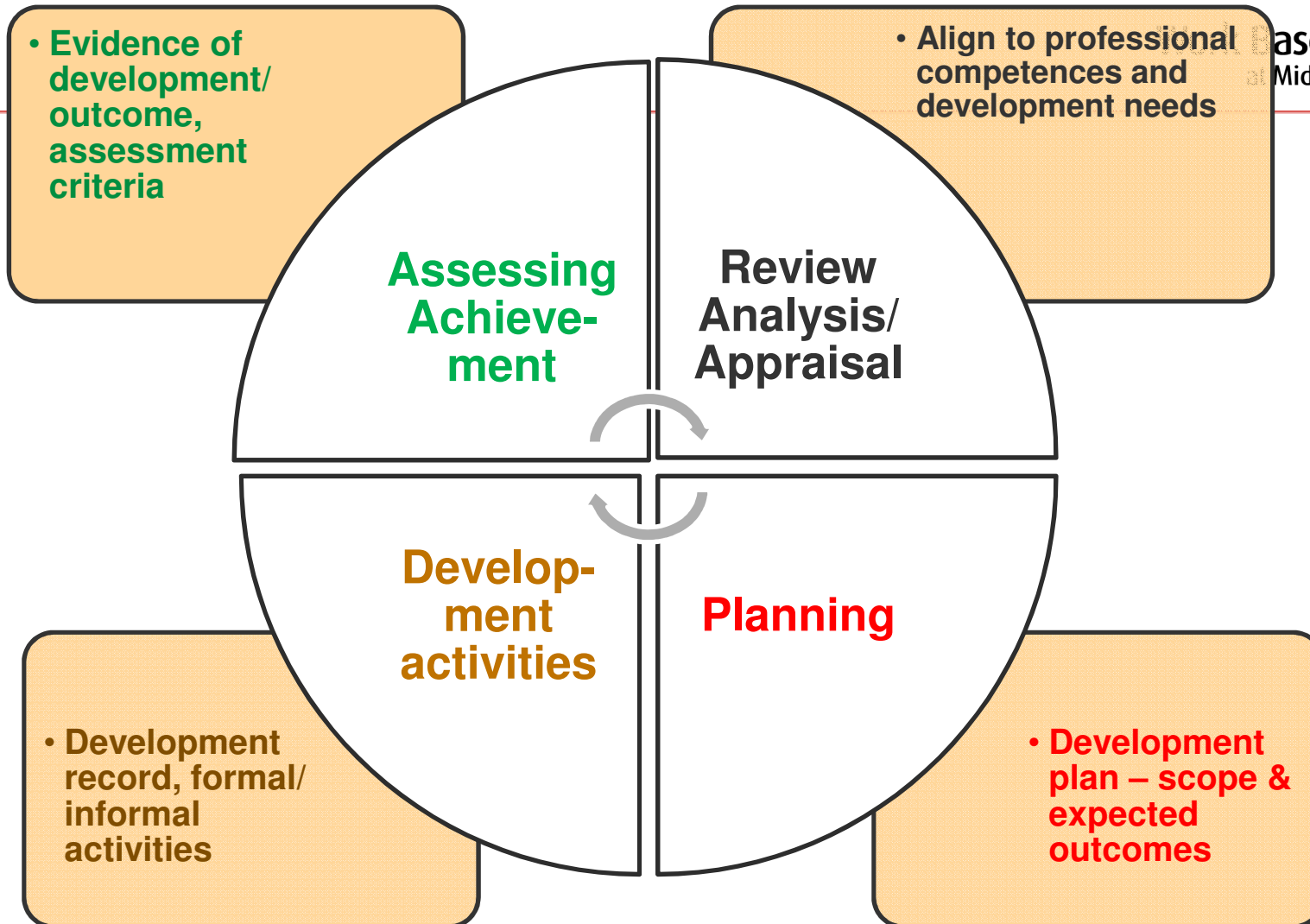
What is CPD?



A CPD model



Based Learning
Middlesex University



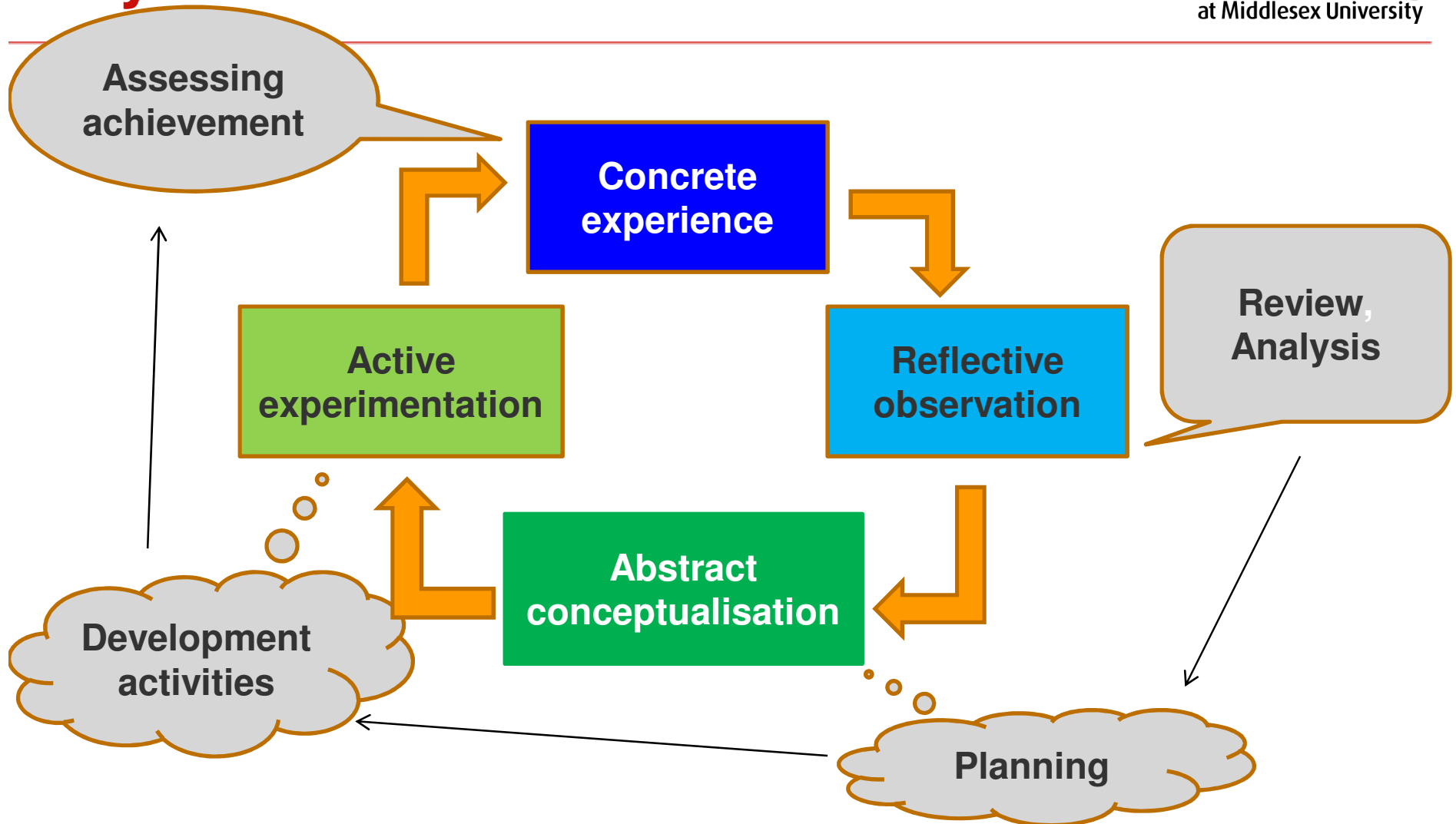
Model adapted from European Project for the Use of Standards of Competence in CPD for Construction Industry Practitioners, (1997)



Kolb's Experiential learning cycle linked to CPD model



Work Based Learning
at Middlesex University





WBL Definitions

Work Based Learning is 'Learning for, in and through paid and unpaid work'

Universities Association for Lifelong Learning
(2006)

IWBL:

'WBL is a learning process which focuses University level critical thinking upon work (*paid or unpaid*) in order to facilitate the recognition, acquisition and application of individual and collective knowledge, skills and abilities, to achieve specific outcomes of significance to the learner, their work and the University'.

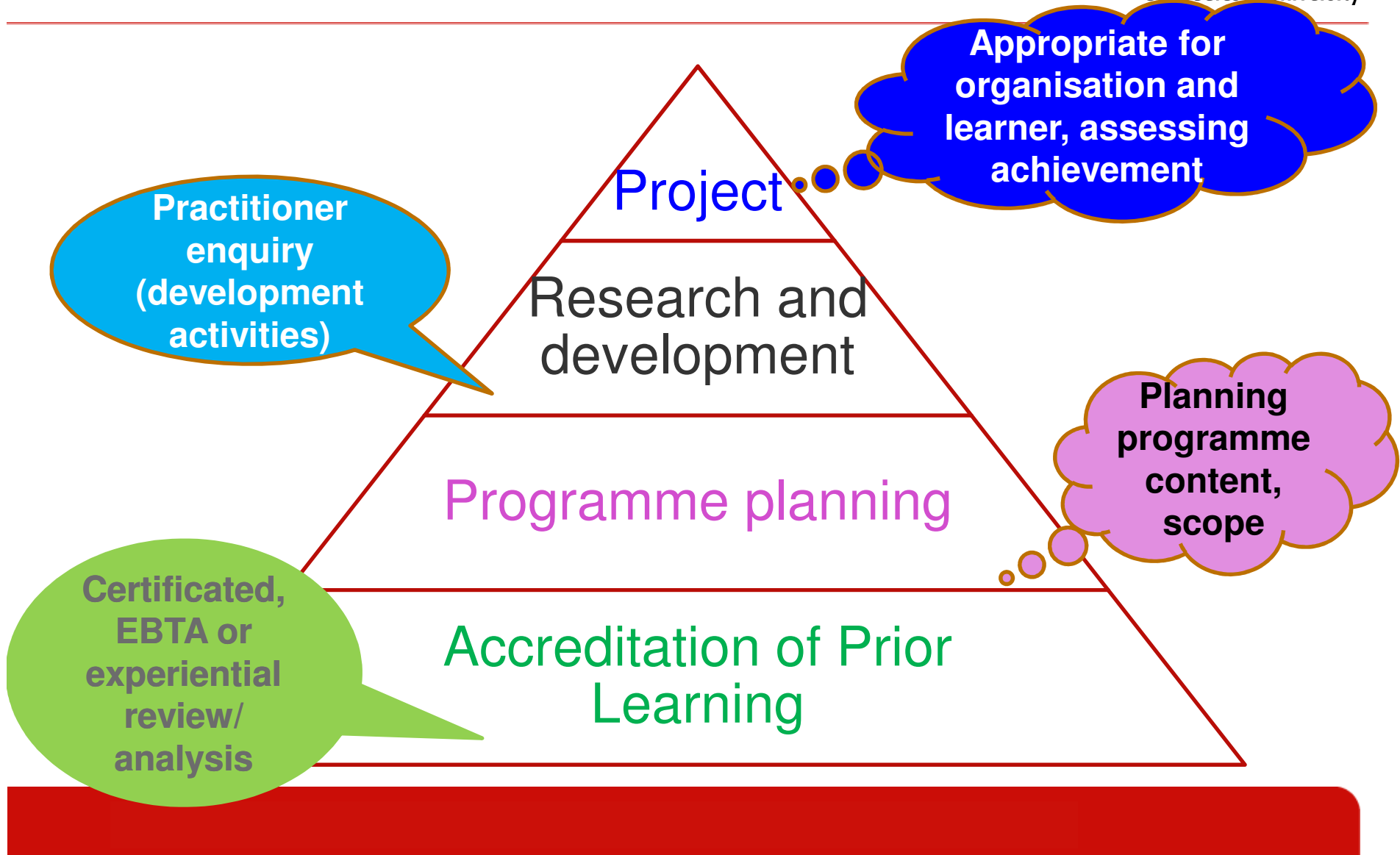
Garnett (2004)





Middlesex's WBL Framework

Work Based Learning
at Middlesex University



Undergraduate Examples of CPD



Work Based Learning
at Middlesex University

- Meeting professional body requirements, e.g. NOS
 - BSc Nursing studies – APCL/ APEL, Projects (20, 30,40 & 60 credits)
 - Use of shell modules including in-house accredited training to awards, levels 4-6, Cert HE/ Dip HE/ Graduate Diploma

Short awards

- in-house training e.g. 'Management Practice' within short project shell modules - Certificate, Diploma, Advanced Dip short Uni awards.
- Retail banking sector: accreditation plus project



Post Graduate CPD

- Whole or part awards, mix of taught/ accreditation
In house/ professional body training, e.g. Leadership, Management, Sports, Orthopaedic programmes
- Use of WBL modules to progress to full Masters, e.g. Research & final project
- **Programme developments:**
 - Build on accredited CPD provision/ short courses
 - e.g. Market testing for new programme
 - Adapt/ accredit study days/ conference opportunities
 - Upgrade professionals by accrediting mandatory training, e.g. Child protection

Using WBL curriculum across disciplines



Work Based Learning
at Middlesex University

- Examples of CPD recognition and development
 - New roles in health care e.g. Clinical Nurse Specialists,
 - Performing arts e.g. dancers
 - Emerging professions: e.g. GP Vets, Nutritionists, Coaches
- Cohorts using WBL programme for own learning and development needs
 - Top up in-house professional programmes, e.g. Met Police specialist training
 - MSc in Professional Networking (Engineering & Information Science)



Framing CPD in WBL

- More work focused
- Trans-disciplinary
- Negotiable content within empty shell modules
- Responsive to work place developments
- Uses knowledge and training from the workplace without duplication of effort, e.g. accreditation
- Flexible deadlines responding to work schedules
- Encourages reflection & transfer of learning from work into work, i.e. Lifelong learning





What does CPD contribute?

Business

- Lifelong learning
- Increased quality and performance
- Increased personal and professional skills
- Organisational learning and development objectives
- Flexible workforce development
- Partnership and knowledge transfer
- Accreditation, quality assurance

Higher education

- Staff development – customer care
- Relevant and current knowledge and skills
- Partnerships with business
- Potential students
- Programme and university staff knowledge
- Possible work placements
- Income from 3rd stream
- Research opportunities



Implications for Higher Education

Work Based Learning
at Middlesex University

- Flexible programmes require flexible delivery!
- Staff development and training required – select appropriate staff
- Use of accreditation – Intellectual property of organisation
- Realistic costs and value; time, educational and subject expertise
- University systems and processes will need adjustment
- Understanding organisational needs
- New time frames for development & delivery
- Research opportunities, but focus on organisation's needs
- Partnership working, understanding and maintenance; memos of cooperation